

Setting Preferences for Creating Objects

You can define your working context when creating objects. Some V6 commands (such as **PLM Access > Import > File...** or **PLM Access > Import > CATIA File...**) require the definition of a working context. When doing so, you specify the corresponding customized type that will be used by default when creating a PLM entity.

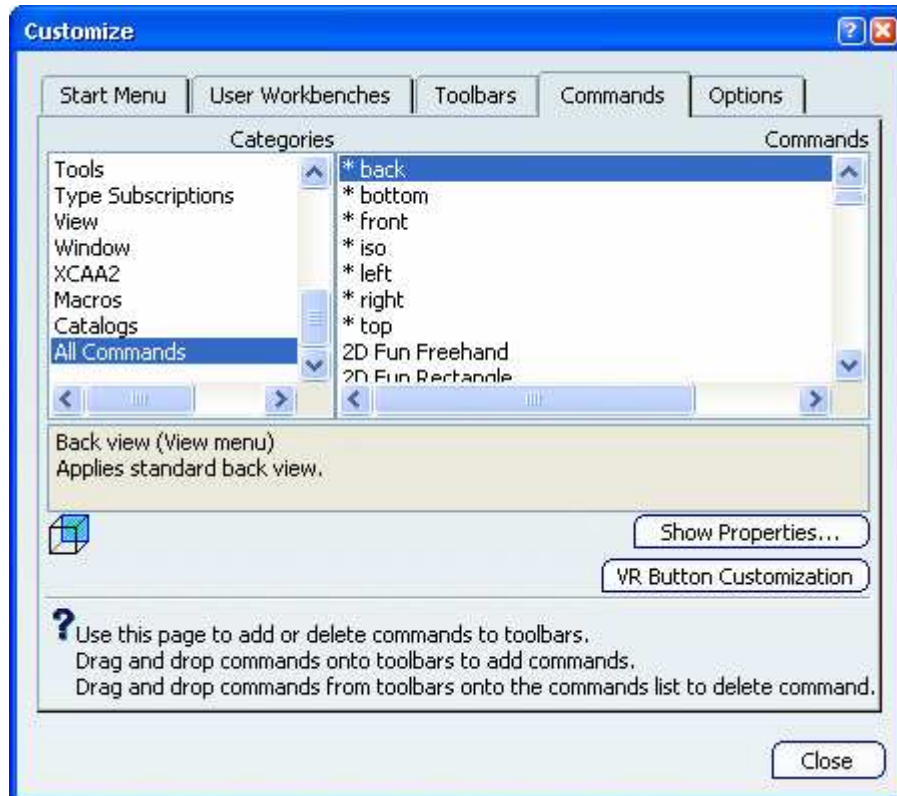
Before you begin: Your administrator can customize the parameters displayed in this dialog box and add as many parameters as needed. Therefore, consider the examples mentioned in this scenario as no more than that: just examples.

1. Select **Tools > Customize...** or right-click any icon in any toolbar then select **Customize**.

The **Customize** dialog box opens.

2. Click the **Commands** tab to list the commands available.
3. Select the category **All Commands**.

All commands available for the workshop you are using as well as global commands (e.g. **Open**, **Save**, etc.) are listed:



4. Select **Create Preferences...** from the list.
5. Drag the command from the command list to the toolbar to which you want to add the command.
6. Drop the command onto the desired toolbar.

7. Click **Create Preferences...** .

You retrieve in the **Creation Preferences** dialog box a shortcut to the PLM preferred environment that can be set using the **Preferred Environment** list in the **Identification** tab:



8. Select the working context of your choice in the **Preferred Environment** list.

The environments displayed in the list are defined by your administrator. The working context you select impacts the PLM attributes that will be created for each object because each environment has its own attributes.

Important: To create and use specific naming rules at PLM entity creation, you must define a dedicated "PLM Attributes Initialization" Knowledge script. For more information, see *CAA C++ Encyclopedia: References: Business Logic Reference: PLM Attributes Initialization*.

9. When finished, click **OK** to validate.