

USER'S GUIDE

Gestión de CATSettings

Ver.: 1.0.1

Manage CATSettings for a determined
CATIA shortcut icon''

Author: **El_Juanri**

Contributors:

Fernando Petre (Ferdo)

Javier García (Gemangi)

Gerardo Veredas

M^a. Angeles Tosquella

Review: 8-02-2010

Ver.: 1.0.1

Review: 1-03-2010

INDICE

1.	Reasons why to create this program	3
2.	Objectives.....	3
3.	What the program can do	3
4.	Content	3
5.	Operating systems.....	4
6.	Language	4
7.	How to use it.....	4
8.	Operating the program.	5
8.1.	Obtaining the information about your CATSettings.....	6
8.2.	Delete all CATSettings for a specific icon.....	6
8.3.	Open the CATSettings folder to manage them manually.....	6
8.4.	Selecting the CATSettings files which we want to keep.....	7
8.5.	Obtaining a backup copy.....	8
8.6.	Restore a backup copy	8
9.	Exit from the program.....	8
10.	Problems which may occure.....	8
11.	Responsabilities	8
12.	Credits and Copyrights.....	8

1. Reasons why to create this program

A problem which appears for many **beginners** users is to know where are the **CATSettings** in order to delete them when problems appear (like losing of the specification tree, losing icons, rarely occur errors, etc...). If they will try to find their CATSettings it will be a little bit difficult due to different kind of installations on different computers

Among other things if they will go to the directory **environment** CATEnv (Environment: variable **-direnv**) and if they will open the environment file ó which is a txt file (Variable: **-env**) - they can see a text like this:

CATUserSettingPath=CSIDL_APPDATA\DassaultSystemes\CATSettings

And that **begins** to be complicated. This folder is **normally** **hidden** by Windows configuration and we need to know where it is.


2. Objectives

This program, through a command, **translates** these **"system variables"** in legible directory, like this:

CATUserSettingPath=C:\Documents and Settings\Juanri\Application Data\DassaultSystemes\CATSettings

And this is something which I understand... That's why we made this program that solves all these problems:

3. What the program can do

- **Know where your CATSettings ere by** drag and drop your shortcut icon thru the panel. The information is found in the box **Dir.CATSettings**.
- **Delete directly all CATSettings:** pushing the button [**Delete all**]
- **Opening directly the folder where your CATSettings are stored:** clicking on icon .
- **Select what CATSettings we wish to save:** using buttons [**Select files to keep**] and [**Delete no keep**].
- **We can make a backup copy:** by pressing the button [**BackUp CATSett.**]
- **We can restore a backup copy:** by pressing the button [**Res. CATSettings**].

4. Content

For a correct use of this program, you need to have in the same folder with the exe file:

- A file **GestionarCATSettings.in**.
- A file **original.xls**.
- A file **Gestionar_CATSettings.pdf**.
- A file **Gestionar_CATSettings-Ing.pdf**.

5. Operating systems

This program was tested on:

- [Windows 2000](#).
- [Windows XP](#) (32 y 64 bits)
- [Windows 7](#). There is a specific button to open folders in Windows 7.

6. Language

When the program is launched, a welcome screen will appear where we can choose in which language we want to see buttons and messages:



Once you hit the button [[Continue](#)], the main panel of the program will show. You can change the language in this panel also by clicking on the what flag you want. In the same time, the help file which you are reading now is launched



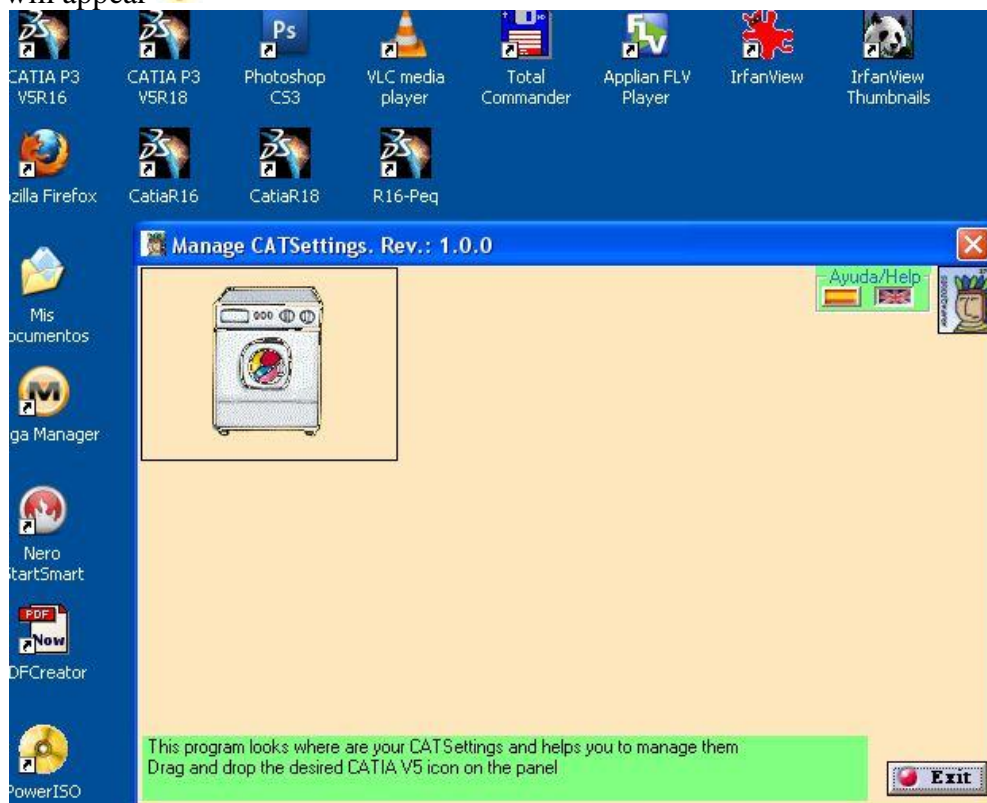
7. How to use it.

For a correct functioning of this program, is necessary to have **CATIA v5** (corresponding with the shortcut icon - file type [.lnk](#)) to be closed. If is not, some options will be resaved, which will require a new execution of the program [GestionarCATSettings.exe](#), in order to have last [CATSettings](#). This program can be used only for **CATIA v5**, which is launched with a shortcut icon.

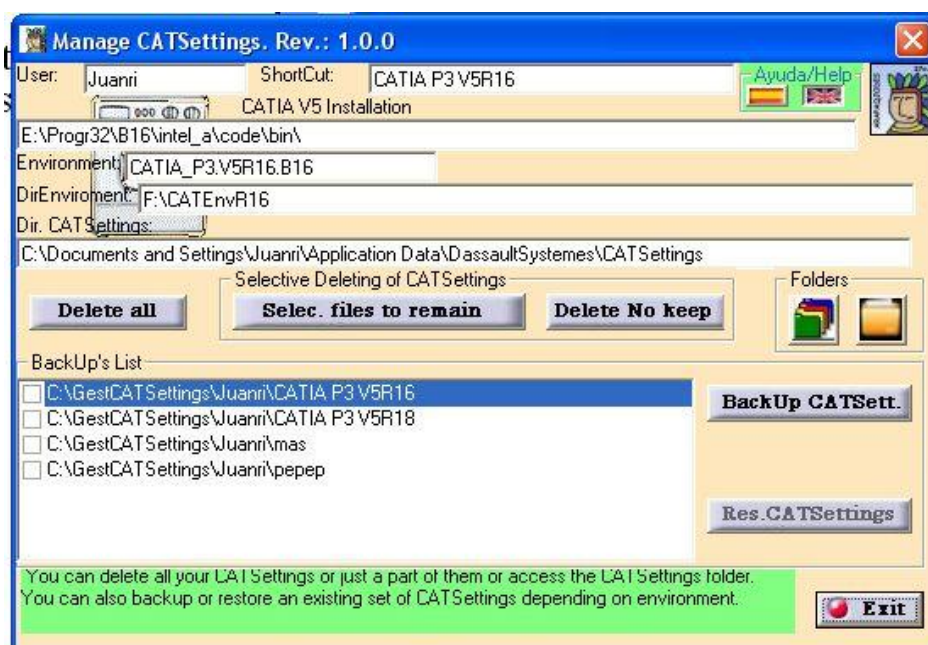
This program doesn't need a **CATIA** license, just his own license file, which is implicit delivered with the program and in case of expiring you have to contact [Juanri](#).

8. Operating the program.

Step 1. - Simply launch the program with the button [Continue], and a panel with a washing machine icon will appear



Step 2. - We need only to **Drag and Drop** the CATIA V5 shortcut icon of which we want to delete or manage the CATSettings thru the panel. When the operation is finished a panel like this bellow will be shown:



What we see it will give us information about:

User: The user who has logon.

Direct access: Name of the icon (shortcut) that has been dragged and dropped on the panel.

CATIA V5 installation path: the folder where CATIA is installed in our computer.

Environment: The file which contains the variables for CATIA in order to know how it will launch CATIA and other things. The file has extension **.txt**

DirEnvironment: The folder where the above file is stored.

Direc. CATSettings: The folder where you can find the CATSettings

"List of Backup's" box: we will have all the folders in **õC\GestCATSettings\User**". It is supposed to have the names of the **"Shortcuts"** CATIA v5 program we have done the backup.

If you do not have any, will be empty, of course.

Depending on what we want to do we have to follow few steps.

8.1. Obtaining the information about your CATSettings

Step 3. Simply we can leave it like that and with **the information** from **õDir. CATSettingsö** box, we can copy **CATSettings** to another **folder** to create a backup

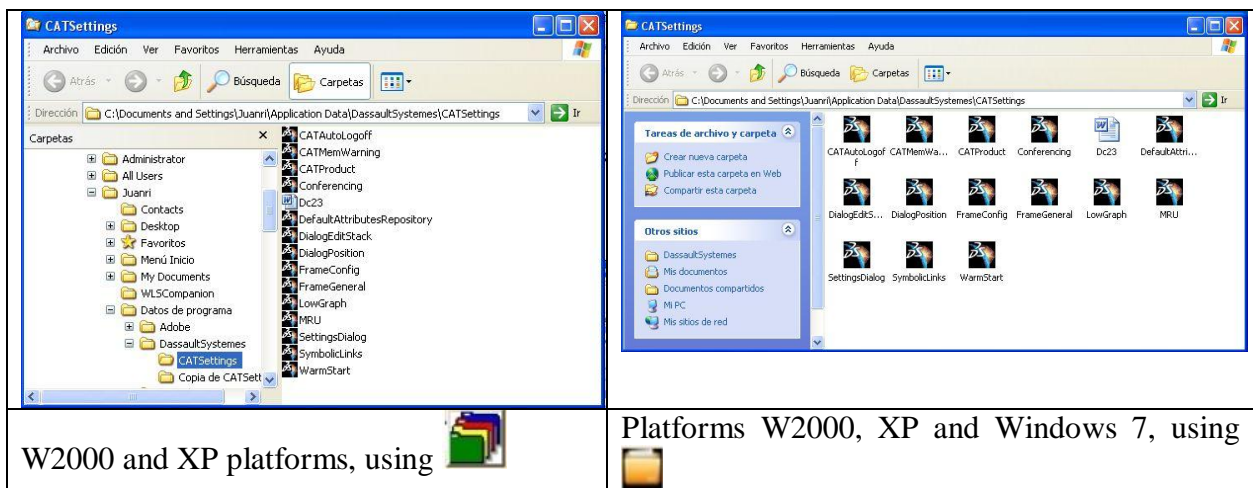
8.2. Delete all CATSettings for a specific icon


Step 3. We can delete **all** CATSettings when we push the button [**Delete all**].


With this option we can launch CATIA and CATIA will restore default CATSettings.

8.3. Open the CATSettings folder to manage them manually

Step 3. In this case, hit the button  **"Open Folder"** and this will show us the CATSettings content folder.



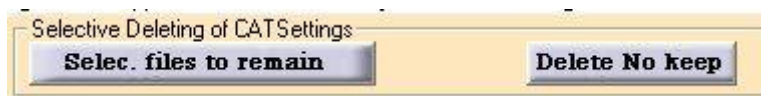
W2000 and XP platforms, using 

Platforms W2000, XP and Windows 7, using 

8.4. Selecting the CATSettings files which we want to keep

In this case, the process will need two steps more:

- Generate an Excel file with the names of the CATSettings files existing in your folder (sub-folders are excluded). After this step is finished, we save the file with the compulsory name **To_Keep.xls**. In this file, there are described some files, and you can decide what to keep or not by deleting files names, but keeping the Excel format.
- The program can keep the files included in Excel file and can delete the others which are **not included**.



However, if we always leave the same files, once defined these in the file **"To_Keep.xls"** is not necessary step 3 which is explained bellow.

Step 3 ó To generate Excel file, we can hit the button [**Select files to remain**] and an **Excel** file, copy of **original.xls**, will appear this file contain a list of CATSettings file names with some explanation for what they serve and will be completed with what our folder contains. The program automatically adds the missing ones and removes that we do not have in our directory. This is the aspect of the file.

A		B		C	D	E
Ficheros a mantener /Files to keep					Conviene Borrar/Delete them	Conviene Mantener/Keep them
1	Salvar y Salir /Save and Exit	Colorear en verde/Color Selection				
2	Nombre Fichero/File name	Utilidad	Utilitie			
3	FrameConfig.CATSettings	Configuracion de las barras	Frame Configuration			
4	FrameGeneral.CATSettings	Configuracion de las barras	Frame General Configuration			
5	DialogPosition.CATSettings	Posicion de las barras	Toolbar position			
6	MRU.CATSettings	Archivos recientes	Recent Files			
7	DLNames.CATSettings	Definicion de DLNames	DLNames definition			
8	Licensing.CATSettings	Definición de licencias	Licence definition			
9	Print.CATSettings	Configuracion de impresoras	Printer configuration			
10	SymbolicLinks.CATSettings	Configuracion de links (Options>General>Document)	Links Configuration (Options>General>Document)			
11	Part.CATSettings	STARTING Español. Elimine del fichero excel los que desee BORRAR y salve con el botón [Salvar y Salir/Save and Exit] Después de al botón [Borrar No Keep] en programa para eliminar los que NO estén ya en ese fichero. Por favor, consulte algunas resumen explicaciones de CATSettings en la hoja Explicación. English. In the Excel file you can DELETE those CATSettings which you want and save what you want to keep with the button [Salvar y Salir/Save and Exit] After that you can hit in the program the button [Delete No Keep] to delete those CATSettings which are NOT saved in this file Please see some summary CATSettings explanations in the Explanation worksheet Aceptar		Infrastructure>Part Infrastructure): Infrastructure>Part Infrastructure): Infrastructure>Product Structure) Infrastructure>Product Structure) Cache Management meters and Measures/ Units Product Structure/ Nodes Customization		
12	PartD.CATSettings					
13	Product.CATSettings					
14	Visu.CATSettings					
15	CATIA.CATSettings					
16	Cke.CATSettings					
17	Node.CATSettings					
18	Search.CATSettings					
19						
20						
21						
22						

Step 4 - In this case, we just have to eliminate those who wish. The colors will help us to decide which we should leave and what to delete. When finished, hit the button [**Save and Exit / Salvar y Salir**] to save the file in the folder **"C:\GestCATSettings\User \"** with the name **"To_Keep.xls"** (mandatory). If the file is existing, we can overwrite by pushing **Yes**.

Step 5 - To be effective this selective deletion, we now push the button [**Delete no keep**]

8.5. Obtaining a backup copy

Step 3 If we want to get a backup copy, just push the button [**BackUp CATSett.**] and a copy of all files, including subfolders will be saved in `C:\GestCATSettings\User\` in a folder with the name identically with the shortcut name. This will help users which shares same computer to know which their CATSettings for different environments are.

Remember you can always save the file in another location, but the program will "drive" you to the User folder..

8.6. Restore a backup copy

Step 3. If we want to recover a complete directory of CATSettings, select it from the list and hit the button [**Res.CATSettings**]. In the list you can find all backupø for the logon user.

When finished, the program informs us that everything went well... I hope, of course.

9. Exit from the program.

Just hit the button [**Exit**]. If we do before the "washing machine" stops (30 cycles or an icon on the screen), we may have to hit that button again to exit.

10. Problems which may occure

When we use the button [**Select files to remain**], the program open an **Excel.exe** which will close when we exit from the program. Even if the worksheet is closed, we can see in `Task Manager` an Excel process which runs. This is possible if the user try to edit an excel file and the Excel program is not responding. To solve this issue, go to **Task Manager** and end the process or even easier close the program `Gestionar_CATSettings`.

11. Responsabilities

The author is not liable for any direct or indirect damages that may result from the use of this program.

12. Credits and Copyrights.

The Program is subject to the rights described in **Creative Common**, as specified in **About** (By double-clicking the icon in the upper right corner).

The program is an original idea of `El Juanri` and is inspired by `drag and drop` form described in the web page `El Guille (Som)`: **Executing a direct access**:

http://www.elguille.info/vb/API/ejecutar_acceso_directo.aspx

But rather then run we execute a `read` . We must give everyone his due!

Contributors at this program:

- **Fernando Petre (Ferdo)**, from Bucharest-Romania. **Thanks Fernando!!**
- **Javier (Gemangi)**, from Barcelona-Spain. **Thanks brother!!**
- **Gerardo Vereda**, from Madrid-Spain (master in programming... 🤖). **Thanks maestro!!**
- **Mª. Ángeles Tosquella**, from Cataluña in Sevilla. **Thanks my colleague!**